



C-PHI | ENGINEERING

ABOUT US

- Envisioned in 2011, M/s C-PHI Engineering is a young geotechnical engineering design firm which is motivated to deliver the needs of various economical sectors.
- Our Motto: Research, Innovate and Implement
- Having professional experience in different fields of civil engineering industries such as Construction, Oil & Gas, Infrastructure, Metro Rail and Industries.
- Specializations: Geotechnical Engineering, Agricultural Geosciences, Sustainable Engineering, Project Management
- Practices Standard Methodologies based on industry's best practices.
- Actively involved in research & development in field of civil engineering.





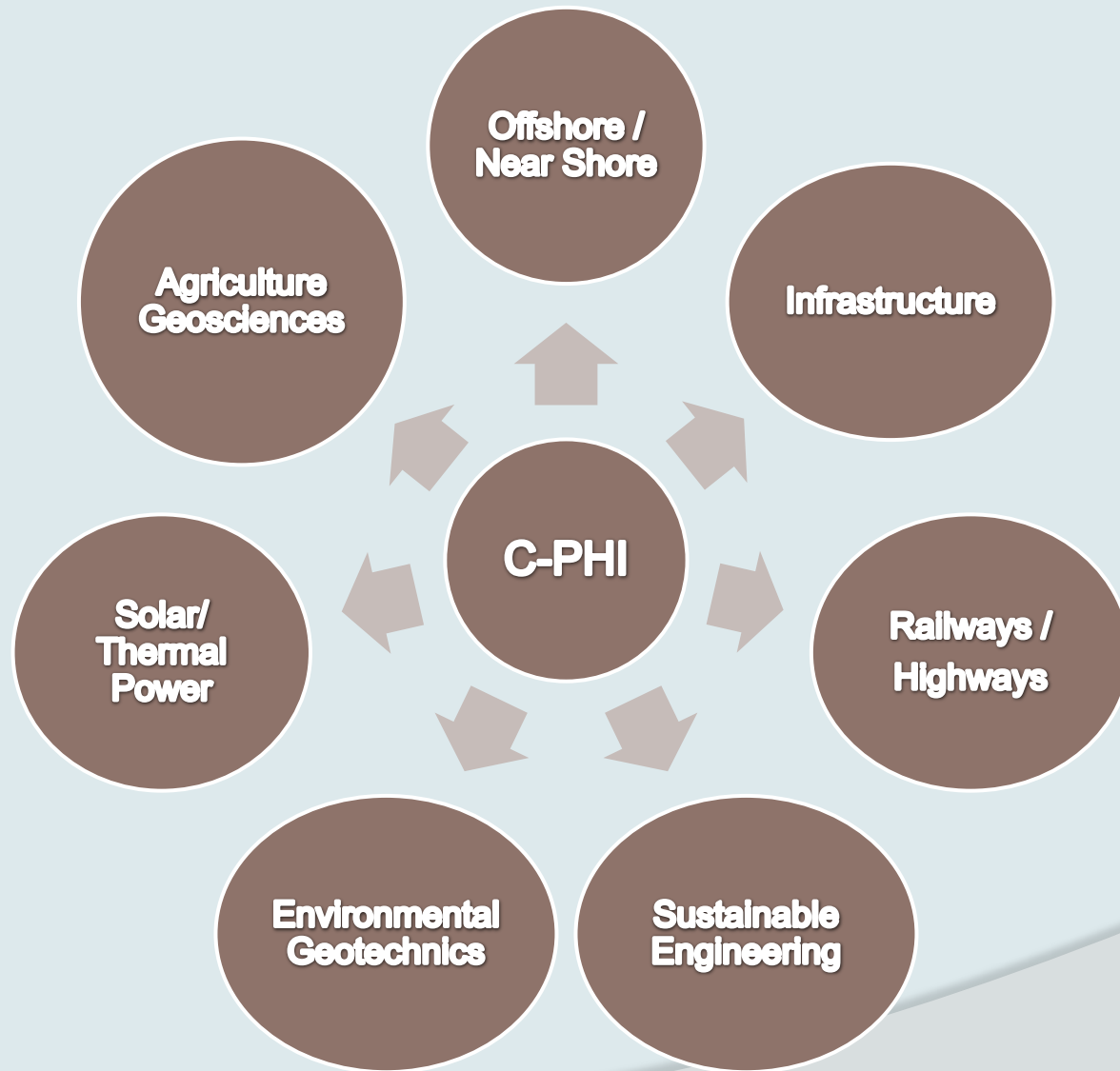
Our Team

Personnel	Qualification	Position
Mr. Sravan MV	B.E., M.Sc [Engg], (P.hD) (Geotechnical Engineering)	Consulting Geotechnical Engineer
Mrs. Mamatha M	B.E. (M.Sc [Engg])	Planning Engineer
Mr. Hanuman NR	Diploma in Civil Engineering	Senior Site Supervisor
Mr A T Venkatesh	Diploma in Civil Engineering	Site Supervisor

Advisors

Dr. H B Nagaraj Professor, BMS College of Engineering, Bangalore	Ph.D (Geotech), IISc,	Head -Technical Advisor
--	-----------------------	-------------------------

Fields of Services



Our Services

SERVICES IN INFRASTRUCTURE SECTOR:

- Design of Shallow and Deep Foundations
- Deep Excavation & Earth Retaining Structures
- Ground Improvement Technology
- Deep Excavation
- Forensic Geotechnical Engineering
- Geotechnical Investigation – QA/QC Services



Our Services

SERVICES FOR HIGHWAY AND RAILWAY SECTORS

◎ DESIGN SERVICES

- Embankment design as per IRC and IRS Codes for Railway / Road Embankments
 - Bearing Capacity Analyses
 - Assessment for Slope Stability
 - Settlement Analysis
 - Liquefaction Potential Analysis
 - Assessment for Ground Improvement potential
- Foundation Design for Minor / Major Bridges

◎ ON FIELD SERVICES

- Assessment of Borrow Materials
- Assessment of Compacted Fill for Embankment



Our Services

SERVICES FOR POWER PROJECTS

- Design of Shallow and Deep Foundations
- Deep Excavation & Earth Retaining Structures
- Ground Improvement Technology
- Deep Excavation
- Forensic Geotechnical Engineering
- Geotechnical Investigation – QA/QC Services



Our Services

SERVICES FOR AGRICULTURAL SECTORS

- ⦿ Identification of Soil Suitability
- ⦿ Assessment of Soil Contamination
- ⦿ Solutions for Contaminated Sites
- ⦿ Solutions for Improvement for Ground Water Retentivity
- ⦿ Improvement of Soil conditions using Organic / Alternative Soil Stabilizers



Our Services

SERVICES FOR ENVIRONMENTAL SECTORS

- ⦿ Design of Landfills
- ⦿ Assessment of Soil Contamination
- ⦿ Solutions for Contaminated Landfills
- ⦿ Estimation of Carbon Footprint for Geo-structures



Our Services

SERVICES FOR SUSTAINABLE ENGINEERING

- Study on use of Industrial wastes & by-products, alternate stabilizing agents, natural resources in construction of sustainable structures.
- Analysis of Embodied Carbon for Geotechnical Structures
- Production of Sustainable Building Materials – Stabilized Earth Blocks, Rammed Earth technologies
- Use of Sustainable Technology for buildings and earth structures
- On – Site Project Management



Our Services

SERVICES FOR OIL & GAS SECTORS

- ⦿ QA/QC for onshore and offshore geotechnical investigations
- ⦿ Technical Assistance and Feasibility Studies for projects.
- ⦿ Write specifications and scope of work for geotechnical investigation
- ⦿ Offshore onboard geotechnical testing services & CPT Data Interpretations



Our Services

FORENSIC GEOTECHNICAL ENGINEERING

Forensic Geotechnical Engineering involves analysis of a project, site conditions, or construction from a geotechnical standpoint. Common issues that may arise that a forensic geotechnical analysis can help with include:

- ⦿ Expansive Soils
- ⦿ Collapsible Soils
- ⦿ Settlement of Shallow and Deep Compacted Fill Soils
- ⦿ Roadway and Parking Area Pavement Failures
- ⦿ Slope Stability Failures
- ⦿ Foundation Failures
- ⦿ Excavation Failures
- ⦿ Underground Pipeline Failures

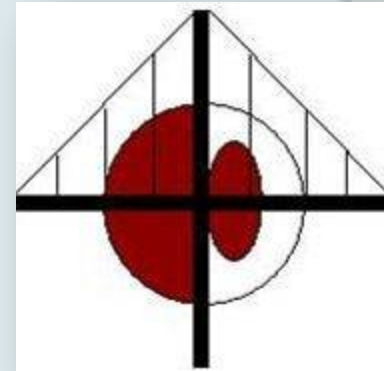


Our Resources

- ◎ **TEAM:** A dedicated team of civil engineering professionals from reputed institutions
- ◎ **HARDWARE :** Workstations having latest configurations
- ◎ **SOFTWARE :** Industry accepted softwares like gINT, Wallap, SLIDE, Settle 3D, including in-house developed programs/ spreadsheets
- ◎ **EQUIPMENTS:** Drilling rigs, along with accessories.
- ◎ **LABORATORY:** A state of art laboratory testing facility confirms to BIS, ASTM and BS standards.



Our Clients



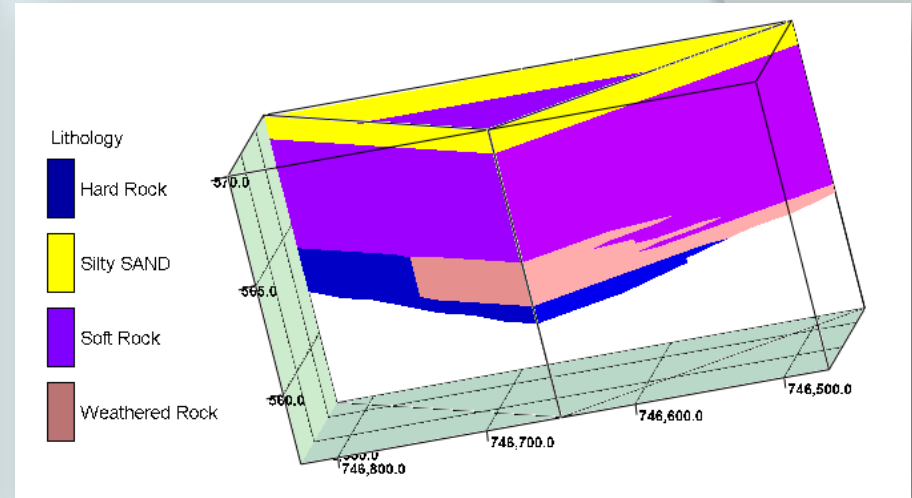
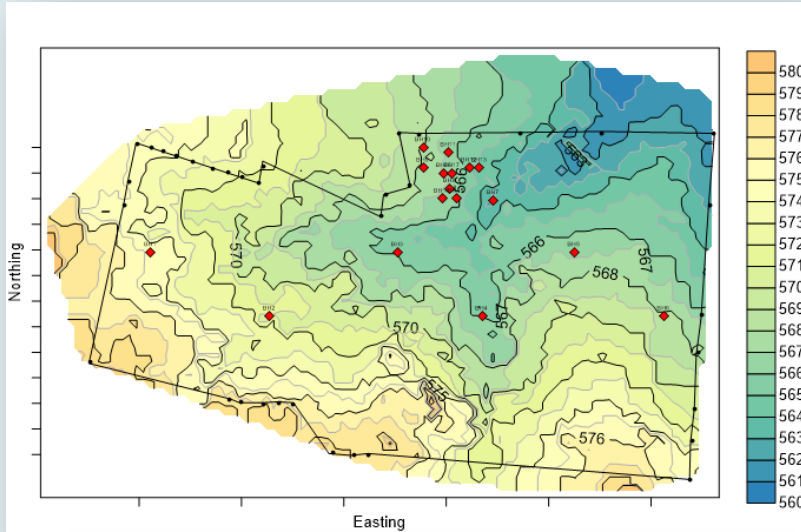
Photos



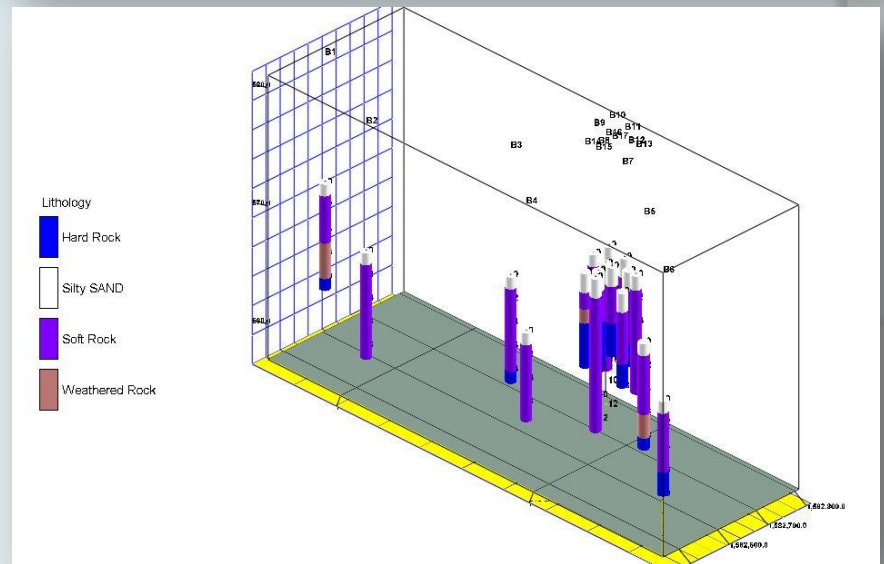
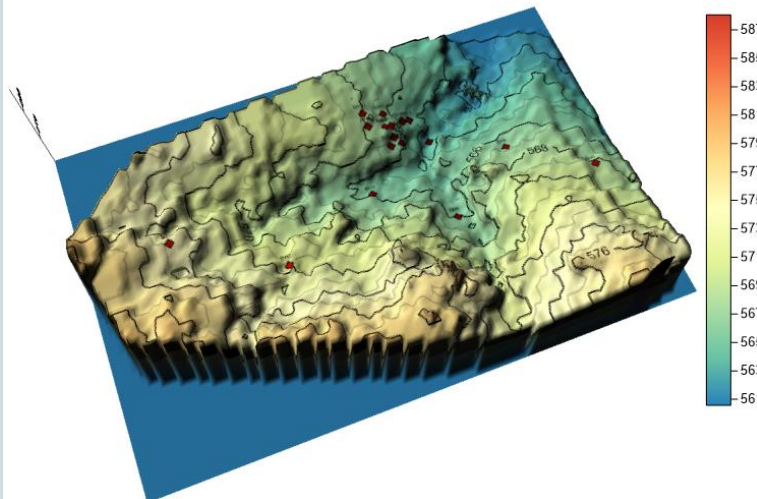
Photos



Photos



3D Surface Modelling



Contact Details

Contact us:

M/s C-PHI | Engineering

Registered Office & Correspondence address:

Address : No. 1163, Anjanadri, 5th Cross,
Dr. Raj Road, Prakashnagar
Bangalore – 560021, INDIA

Mobile no. : +91 – 9886 036971

Laboratory Address: No. 46, Mahaganapathy Nagar,
Bannerghatta Road, Bangalore – 560083

Email id : cphi@c-phi.com ; sravanmv@c-phi.com

